



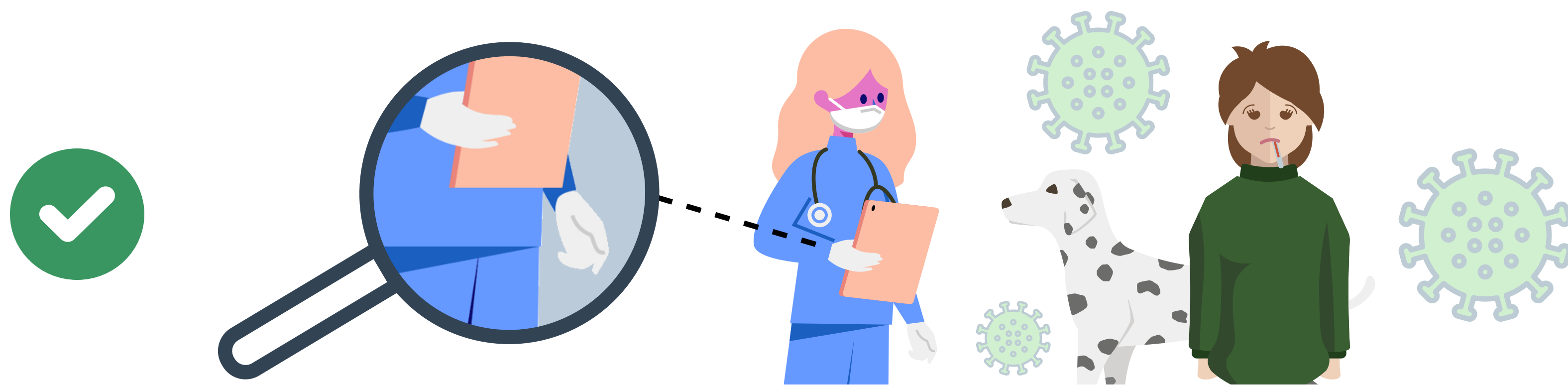
Protect Yourself and Others

- Wear Gloves, Wash Your Hands -



Use disposable examination gloves when...

- Working near a suspected or confirmed COVID-19 case
- Providing care to an animal with exposure to a person with COVID-19 symptoms
- Providing care to an animal with an illness suspicious of SARS-CoV-2 infection
- Performing aerosol-generating procedures on animals (such as dental cleaning)



After removing gloves, masks, or other PPE...

- Wash your hands with soap and water for at least 20 seconds
- If soap and water is unavailable, alcohol-based hand sanitizer should be used

Key times to wash hands...

- Before touching your eyes, nose, or mouth
- Before, during, and after preparing food
- Before eating food
- Before and after caring for someone who is sick
- After using the toilet
- After blowing your nose, coughing, or sneezing
- After touching an animal, animal feed, or animal waste
- After touching an item or surface frequently touched by other people

